

Daisy Bell

(bicycle built for two)

Written and composed by

Harry Dacre

1892

Daisy Bell was a Victorian music hall favourite, written and released in 1892 by British songwriter Harry Dacre (a pen name of Frank Dean, 1857–1922). When Dacre moved to the United States, he had to pay import duty for his bicycle, upon which a friend remarked that if he had brought a “bicycle built for two” he would have had to pay double duty. This descriptive phrase so pleased Dacre that he made it the punchline of his song.

Typeset by www.sylphe.ch in 2019 and dedicated to the public domain — you are free to copy, modify, distribute, and perform this sheet music (see Creative Commons CC0). Source for this edition were scans of the 1892 edition by T. B. Harms & Co., available from the *New York Public Library Digital Collections* and also on *Wikimedia Commons*.

Daisy Bell

(bicycle built for two)

Harry Dacre 1892

Tempo di Valse

Piano introduction in G major, 3/4 time. The piece begins with a forte (f) dynamic. The right hand features a melodic line with grace notes and a trill, while the left hand provides a steady accompaniment of chords and eighth notes.

1. There is a flow-er with-in my heart, Dai - sy, Dai - sy!

The vocal line consists of a simple melody with a trill on the word 'Daisy'. The piano accompaniment continues with a consistent rhythmic pattern of chords and eighth notes.

Plant-ed one day by a glanc - ing dart, Plant-ed by Dai - sy Bell!_____

The vocal line continues the melody, ending with a long note on 'Bell!'. The piano accompaniment remains consistent.

Whether she loves me or loves me not, Some-times it's hard to tell;_____

The vocal line features a melodic phrase with a trill on 'Daisy'. The piano accompaniment continues with the same accompaniment.

Yet I am long-ing to share the lot Of beau - ti - ful Dai - sy Bell!_____

The vocal line concludes the piece with a final melodic phrase. The piano accompaniment ends with a final chord.

Chorus. A little faster

Dai - sy, Dai - sy, Give me your an - swer, do!

I'm half cra - zy, All for the love of you! It

won't be a styl - ish mar - riage, I can't af - ford a car - riage, But

you'll look sweet On the seat Of a bi - cy - cle built for two!

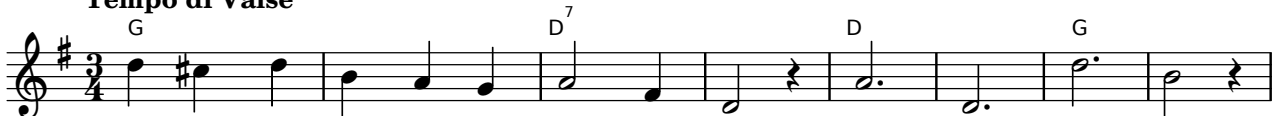
2. We will go tan-dem as man and wife,
 Dai-sy, Dai-sy!
 Ped'-ling a-way down the road of life,
 I and my Dai-sy Bell!
 When the road's dark we can both des-pise
 P'lice men and "lamps" as well;
 There are "bright lights" in the daz-zling eyes
 Of beau-ti-ful Dai-sy Bell!

3. I will stand by you in "wheel" and woe,
 Dai-sy, Dai-sy!
 You'll be the bell(e) which I'll ring, you know!
 Sweet lit-tle Dai-sy Bell!
 Wou'll take the "lead" in each "trip" we take,
 Then, if I don't do well
 I will per-mit you to use the break,
 My beau-ti-ful Dai-sy Bell!

Daisy Bell

(bicycle built for two)

Harry Dacre 1892

Tempo di Valse

1. There is a flow - er with - in my heart, Dai - sy, Dai - sy!
 2. We will go "tan-dem" as man and wife, Dai - sy, Dai - sy!
 3. I will stand by you in "wheel" or woe, Dai - sy, Dai - sy!



Plant-ed one day by a glanc-ing dart, Plant-ed by Dai - sy Bell!___
 "Ped'ling" a - way down the road of life, I and my Dai - sy Bell!___
 You'll be the bell(e) which I'll ring, you know! Sweet lit - tle Dai - sy Bell!___



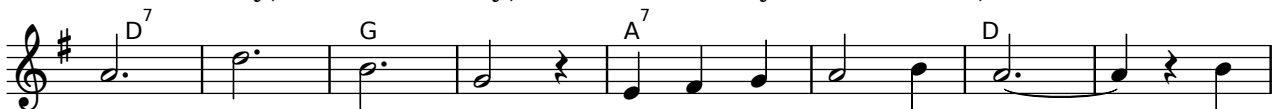
Wheth-er she loves me or loves me not, Sometimes it's hard to tell;___
 When the road's dark we can both des-pise P'lice men and "lamps" as well;___
 You'll take the "lead" in each "trip" we take, Then, if I don't do well,___



Yet I am long-ing to share the lot Of beau-ti-ful Dai - sy Bell!___
 There are "bright lights" in the daz-zling eyes Of beau-ti-ful Dai - sy Bell!___
 I will per - mit you to use the break, My beau-ti-ful Dai - sy Bell!___

Chorus. A little faster

Dai - sy, Dai - sy, Give me your an - swer, do!___



I'm half cra - zy, All for the love of you!___ It



won't be a styl-ish mar - riage,___ I can't af - ford a car - riage,___ But



you'll look sweet On the seat Of a bi-cy-cle built for two!___